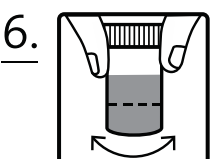
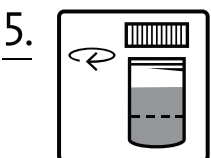
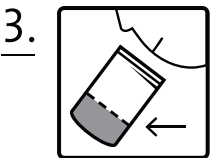
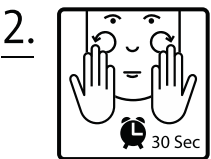
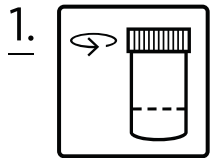


Prior to collection

- Do not eat, smoke, drink, brush your teeth or chew gum one hour before collection of the sample. Your lips must be clean of makeup or lipstick.
- At the moment of collection practice a gentle massage on the cheeks, rubbing the teeth in a circular motion for about 30 seconds in order to stimulate saliva production and cell detachment. Then fill the tube with saliva up to the indicated mark.
- If the sampling is done to another person, it is recommended to wear gloves to avoid contamination with DNA.



Provided material

- A bag with two containers, one for the collection of saliva and another tube containing the DNA stabilizing liquid.
- Three numbered labels:
 - a. One to be stuck on the tube after the saliva sample collection.
 - b. One to be stuck on the informed consent and order forms.
 - c. One to be stuck on the Health Questionnaire (if required).
- Padded envelope with the shipping address already printed to send the sample.

Sample collection

- Fill the container with liquid saliva (ignoring the foam) up to the line shown on Picture 3.
- Pour the DNA stabilizing liquid into the collected sample. Picture 4.
- Take the cap and close the tube tightly. Picture 5.
- Shake the capped tube for 5 seconds.
- Stick a label on the tube with the patient's name or the order number.
- Discard the tube of DNA stabilizing liquid in the recycling bin.

Sample shipping

- Place the sample in the padded envelope with EUGENOMIC address. Include the informed consent and order forms, properly filled in, signed and labeled.
- If the study requires Health Questionnaire, fill it in and include it labeled.
- Contact us at +34 93 292 29 63 or mail to repcion@eugenomic.com, as soon as the sample is available for being picked up by our courier.